

Dr. Edmund A. Babler Memorial State Park

BY THE NUMBERS

LOCATION: St. Louis County

NUMBER OF ACRES: 2,441

NUMBER OF FULL-TIME STAFF: 7

NUMBER OF PART-TIME STAFF: 16

VOLUNTEER HOURS:* 5,858

STEWARDSHIP HOURS: 46

2022 ATTENDANCE:* 530,672

MILES OF TRAIL: 17.2

NUMBER OF STRUCTURES: 59

MILES OF ROADWAYS: 7.46

NUMBER OF PROGRAMS PRESENTED:* 186

STATE SALES TAX PAID:* ** \$10,649.63

LOCAL SALES TAX PAID:* ** \$10,115.26

TOTAL SALES TAX: \$20,764.89

BUDGET

SMALL MAINTENANCE & REPAIR BUDGET: \$62,000.00

ANNUAL BUDGET: \$771,262.00

CAPITAL IMPROVEMENTS PROJECTS IN PROGRESS:* 4

CAMPING & LODGING

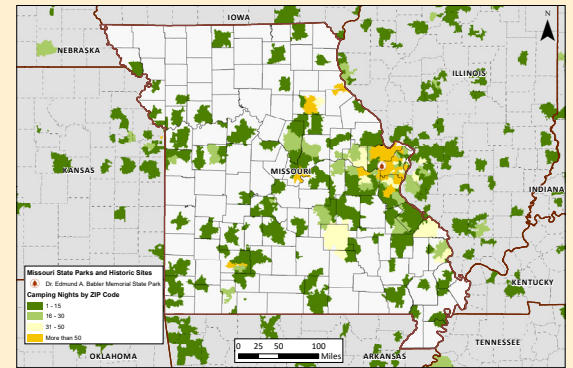
NUMBER OF CAMPING NIGHTS SOLD:* 11,739

NUMBER OF CAMPSITES: 75

NUMBER OF GROUP CAMPS: 1

NUMBER OF OVERNIGHT GUESTS:* 28,367

CAMPING NIGHTS SOLD BY ZIP CODE: >>>>>>



SPECIAL EVENTS

MISSOURI STATE PARK EVENTS: 15

PHOTO ALBUM

