

Johnson's Shut-Ins State Park

BY THE NUMBERS

LOCATION: Reynolds County

NUMBER OF ACRES: 9,432.27

NUMBER OF FULL-TIME STAFF: 8

NUMBER OF PART-TIME STAFF: 24

VOLUNTEER HOURS:* 5,157

STEWARDSHIP HOURS: 3,503.45

2022 ATTENDANCE:* 211,771

MILES OF TRAIL: 36.7

NUMBER OF STRUCTURES: 57

MILES OF ROADWAYS: 4.84

NUMBER OF PROGRAMS PRESENTED:* 72

STATE SALES TAX PAID:* \$27,044.52

LOCAL SALES TAX PAID:* \$9,601.61

TOTAL SALES TAX: \$36,646.13

BUDGET

SMALL MAINTENANCE & REPAIR BUDGET: \$20,500.00

ANNUAL BUDGET: \$666,170.00

CAPITAL IMPROVEMENTS PROJECTS IN PROGRESS:* 2

CAMPING & LODGING

NUMBER OF CAMPING NIGHTS SOLD:* 11,918

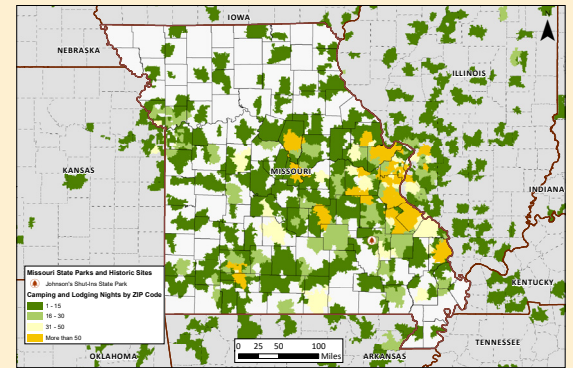
NUMBER OF LODGING NIGHTS SOLD:* 1,197

NUMBER OF CAMPSITES: 79

NUMBER OF LODGING UNITS: 6

NUMBER OF OVERNIGHT GUESTS:* 41,007

CAMPING NIGHTS SOLD BY ZIP CODE: >>>>>>



SPECIAL EVENTS

MISSOURI STATE PARK EVENTS: 3

THIRD PARTY EVENTS: 6

PHOTO ALBUM



* All numbers through December 2022. † Information includes park and concession-run operations. ** Estimated park and concession sales tax paid.